

BOGE & BOGE (1980) LTD.

**ENGINEERING
CONSTRUCTION
DESIGN-BUILD**

WWW.BOGE-BOGE.COM

CONTACT:

**HANS BOGE, P.ENG.
HANS E. BOGE, P. ENG.
PAUL H. BOGE, P. ENG.**



**Diaser Management (2006) Ltd
268 Ellen Street
Winnipeg, MB R3A 1A7 Canada
Tel: (204) 943 8855
Fax: (204) 943 8856**

**BOGE
BOGE**



(1980) LTD

**Boge & Boge (1980) Ltd.
268 Ellen Street
Winnipeg, MB R3A 1A7 Canada
hboge@boge-boge.com
www.boge-boge.com
Tel: (204) 942 7276
Fax: (204) 942 7288**

About Us

Boge & Boge (1980) Ltd. was founded on February 2, 1976 in Winnipeg, Canada in response to requests from the construction and development industry that the principals offer their experience and expertise to the industry as independent consultants. The firm continually broadened its scope of practice as it became a multi-disciplined service provider in a global community. Today, Boge & Diaser provide a full range of engineering, construction, design-build, consulting and project management services.

Boge and Diaser are characterized by people who provide thorough and professional service to their clients. The firm and its predecessors have completed design, construction and commissioning on projects throughout Canada and internationally.

Boge and Diaser are recognized for their ability to solve difficult problems creatively. The experience gained from applying traditional methodology combined with innovative and new technology provides Boge and Diaser with a comprehensive resource for developing effective solutions. Boge has demonstrated a commitment to become knowledgeable about and invest in evolving technologies. The firm's ability to listen to client's needs and to meet them within a prescribed budget and schedule, has secured a portfolio of long term clients.

Boge's commitment to excellence provides confidence to the owner that their interests are well looked after.



**Diaser Management (2006) Ltd
268 Ellen Street
Winnipeg, MB R3A 1A7
Tel: (204) 943 8855
Fax: (204) 943 8856**

**BOGE
BOGE**



(1980) LTD

**Boge & Boge (1980) Ltd.
268 Ellen Street
Winnipeg, MB R3A 1A7
hboge@boge-boge.com
www.boge-boge.com
Phone: (204) 942 7276
Fax: (204) 942 7288**

Mission

Our goal is to provide engineering, construction, design-build, and consulting services to our clients by continually growing in our problem solving skills and focusing on the face to face relationships that have made this family run business succeed.

Our work environment fosters excellence in our service to our clients and to each other.

Our guiding principles of integrity and the pursuit of cost-effective, timely and constructible solutions stand as key pillars to our success and that of our clients.

Our mission is to never lose focus of our client's needs and to that end, work continuously to improve our ability to offer timely, constructible and cost-effective solutions for their needs.



**Diaser Management (2006) Ltd
268 Ellen Street
Winnipeg, MB R3A 1A7
Tel: (204) 943 8855
Fax: (204) 943 8856**

**BOGE
BOGE**



(1980) LTD

**Boge & Boge (1980) Ltd.
268 Ellen Street
Winnipeg, MB R3A 1A7
hboge@boge-boge.com
www.boge-boge.com
Phone: (204) 942 7276
Fax: (204) 942 7288**

BOGE

DIASER

ENGINEERING • CONSTRUCTION • DESIGN-BUILD

Boge and Boge (1980) Ltd. and Diaser Management (2006) Ltd. provide

- **Engineering**
- **Construction and**
- **Design-Build services**

to the industrial sector. Boge and Diaser work together to provide true “in-house” design and build services. Our team provides:

- multi-disciplinary engineering services
- project management
- construction management
- procurement
- union or non-union labour resources

Our projects include expansions, process improvements, new facilities, surface facilities at a new mine, shutdown and maintenance work, materials handling, business plans and scoping studies.

Boge and Diaser are characterized by people who perform work safely with excellence, creativity and efficiency. We are flexible and can augment an owner’s preferred contractors, or we can provide total turn-key project solutions.

Project sizes vary from a crew of 4 to 150 and contract values ranged from \$250,000 - \$20,000,000.

We look forward to an opportunity to provide our services to you.



Diaser Management (2006) Ltd
268 Ellen Street
Winnipeg, MB R3A 1A7
Tel: (204) 943 8855
Fax: (204) 943 8856

BOGE BOGE

(1980) LTD

Boge & Boge (1980) Ltd.
268 Ellen Street
Winnipeg, MB R3A 1A7
hboge@boge-boge.com
www.boge-boge.com
Phone: (204) 942 7276
Fax: (204) 942 7288

BOGE

DIASER

DESIGN-BUILD CONSTRUCTION



The advantage of Design-Build construction is that our firm is completely responsible for the design, construction and commissioning of the entire project. Also known as “turn-key”, Design-Build offers a single point of contact for their project. Boge and Diaser provide complete facility packages. Whether the need is for a partial facility upgrade or a completely new facility our team provides a solution – from start to finish.

- Mining
- Industrial facilities
- Edible Oil Processing Facilities
- Foreign & Domestic
- Complete engineering design, construction and commissioning
- New facilities, upgrades, expansions, shutdown
- Contract values range from \$250,000 to \$20,000,000



Diaser Management (2006) Ltd
268 Ellen Street
Winnipeg, MB R3A 1A7
Tel: (204) 943 8855
Fax: (204) 943 8856

**BOGE
BOGE**

(1980) LTD

Boge & Boge (1980) Ltd.
268 Ellen Street
Winnipeg, MB R3A 1A7
hboge@boge-boge.com
www.boge-boge.com
Phone: (204) 942 7276
Fax: (204) 942 7288

CROWFLIGHT MINERALS



Boge & Boge provided construction services to the Crowflight Minerals project located at Bucko Lake near Wabowden, Manitoba.

Boge provided the structural, mechanical, electrical and controls labour, procurement and management to construct the new surface facilities including a new mill, crusher house, conveyance and tanks. Boge also provided on-site project management as well as support engineering from the Winnipeg office. The team also assisted in the commissioning of this nickel project.



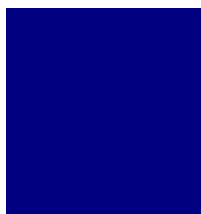
Boge project value was \$18 Million.

- Erected structural steel
- Installed equipment
- Installed piping
- Installed electrical
- Management
- Assisted in commissioning
- Provided engineering support
- Procurement support
- Project Value: \$18 Million



Diaser Management (2006) Ltd
268 Ellen Street
Winnipeg, MB R3A 1A7
Tel: (204) 943 8855
Fax: (204) 943 8856

**BOGE
BOGE**



(1980) LTD

Boge & Boge (1980) Ltd.
268 Ellen Street
Winnipeg, MB R3A 1A7
hboge@boge-boge.com
www.boge-boge.com
Phone: (204) 942 7276
Fax: (204) 942 7288

SCAVENGER PROJECT



Boge provided design-build services for a process improvement project valued at \$15.0M

Our team was responsible for the complete design, construction and commissioning of the project. This required us to keep the existing system operational with an intricate network of tie-ins while we constructed the new system.

Our team provided all labour for the project including a wide range of skilled tradespeople.

We provided:

- Complete multi-disciplinary engineering:
 - Structural
 - Mechanical
 - Electrical
 - Instrumentation
 - Controls
- Project Management
- Equipment procurement (major equipment by owner)
- Material procurement
- Demolition
- Construction
- Construction management
- Equipment Installation
- Commissioning

Our team combined technical experience with on-site construction knowledge to provide a complete solution from start to finish.



BOGE
BOGE



(1980) LTD

Boge & Boge (1980) Ltd.
 268 Ellen Street
 Winnipeg, MB R3A 1A7
 hboge@boge-boge.com
 www.boge-boge.com
 Phone: (204) 942 7276
 Fax: (204) 942 7288



Diaser Management (2006) Ltd
 268 Ellen Street
 Winnipeg, MB R3A 1A7
 Tel: (204) 943 8855
 Fax: (204) 943 8856

RECENT MAJOR PROJECTS

Project: New Nickel Mine
Date: 2007-2008
Location: Near Thompson, Manitoba, Canada
Description: Procure equipment, partial design, onsite engineering
Construction of civil, structural, electrical and mechanical elements.
Boge Value: \$18,000,000

Project: Edible Oil Canola Plant Expansion
Date: 2006-2007
Location: Saskatchewan, Canada
Description: Complete Design-Build of entire project
Boge Value: \$20,000,000

Project: Process Improvement at Mine
Date: 2008
Location: Northern Manitoba, Canada
Description: Complete design and construction
Boge Value: \$13,000,000

Project: Process Improvement at Mine
Date: 2008
Location: Northern Manitoba, Canada
Description: Complete Design and construction
Boge Value: \$4,000,000

Project: Proprietary Prototype Incinerator
Date: 2008-2009
Location: Ontario
Description: Structural design and mechanical installation
Boge Value: \$1,200,000

Project: Airport Expansion – Structural Steel
Date: 2008-2009
Location: Winnipeg
Description: Quality control, construction of repairs
Boge Value: \$500,000

Project: 18 m Diameter Thickener for Uranium Mine
Date: 2007-2008
Location: Northern Saskatchewan
Description: Mechanical, structural, building envelope installation
Boge Value: \$750,000

INCINERATOR PROJECT



Our client developed a prototype proprietary incinerator capable of destroying pathogens at or above applicable guidelines and requirements.

Boge was privileged to assist with the first commercial construction of this project. The incinerator allows waste from the rendering industry, pulp and paper, ethanol and canola plants as well as municipal waste to be converted to energy to be returned to the existing process or alternative methods.

Boge provided:

- Foundation & structural engineering
- Steel construction
- Mechanical installation
- Stainless steel pipe work
- Site management
- Construction management services including coordination with local trades, suppliers and various designers to complete the project.

This project describes our flexibility to provide services where they are required as well as provide excellence for new and challenging projects.



BOGE
BOGE



(1980) LTD

Boge & Boge (1980) Ltd.
268 Ellen Street
Winnipeg, MB R3A 1A7
hboge@boge-boge.com
www.boge-boge.com
Phone: (204) 942 7276
Fax: (204) 942 7288



Diaser Management (2006) Ltd
268 Ellen Street
Winnipeg, MB R3A 1A7
Tel: (204) 943 8855
Fax: (204) 943 8856

FILTER PROJECT

In 2003 Boge and Boge (1980) Ltd. designed, built, commissioned and provided training for a complete filter system that received slurry, dewatered it to a specified dryness and interfaced the system with existing works. Engineering for process, pumping, piping, ancillary equipment, structural, electrical, controls and instrumentation aspects was combined with excellence in construction management and labour to produce a highly successful \$9,000,000 (CAD) project.

The team of Boge and Diaser provided costing and scheduling data in the feasibility stage that proved to be accurate. The work was completed slightly ahead of schedule and slightly under the predicted cost. Over 50,000 person hours of labour were completed without a single lost time safety incident.

Research and site visits to Utah and Chile to study Svedala, Larox and Lasta filters combined with an inspection of the filter being assembled in Japan and the construction crew's familiarity with US and Phillippe filters assured good decision making in the design and planning aspects as they pertained to reliability, availability, constructability, maintenance and operations aspects.

Carefully engineered lifts to a fifth floor and the creative use of existing structure to facilitate construction with an efficient construction crane system made possible excellent cost control. The construction crane system was designed to become a maintenance crane, which dramatically supports permanent operations and maintenance activities.

The early involvement of Boge in the pre-feasibility stage facilitated an effective incorporation of constructability, maintenance and operations perspectives into the systems design and general arrangement planning.



Filter Project: Construction Near Completion

A "just in time" design and delivery approach to platforms and access ways assured that maintenance and operations personnel had meaningful input at the stage where they could see the actual equipment and fully understand what would be required to maintain and operate it.

Demolition, the removal of existing equipment (including rigorous procedures for asbestos removal) and the construction of the new system was carefully planned and executed during continuous plant operation so that the commissioning and testing was possible during the annual shutdown time period

The project included a filter, air receiver, pressurized air, surge tankage, filtrate management, two new conveyors, slurry pumping and circulation, water, steam relocation, electrical, instrumentation, controls, structural aspects and noise attenuation.

BOGE
BOGE



Diaser Management (2006) Ltd
268 Ellen Street
Winnipeg, MB R3A 1A7
Tel: (204) 943 8855
Fax: (306) 943 8856

Boge & Boge (1980) Ltd.
268 Ellen Street
Winnipeg, MB R3A 1A7 Canada
hboge@boge-boge.com
www.boge-boge.com
Phone: (204) 942 7276
Fax: (204) 942 7288

(1980) LTD

ORE RECEIVING PROJECT

In 2005, Boge and Boge (1980) Ltd. was responsible for the design, construction and commissioning of a new ore receiving facility at a mine.

The purpose of the project was to replace a temporary feed process with a permanent facility that would accommodate the handling of ore from transport trucks onto the main conveyor that feeds the mill.

Total project value was approximately \$3.5 Million and was designed, constructed and commissioned within seven months and completed on schedule and on budget.

Our design-build approach included:

- Civil – excavation, road construction, drainage, surveying
- Structural – design and construction of a complete ore receiving pocket including steel piles, concrete works, structural steel, platforms, ramps, access ways, connection to the existing facility, building enclosure
- Mechanical – fabrication and installation of conveyors, installation of new conveyor take up, vibratory feeder, hydraulic power pack, conveyor transfer points, dust enclosure, sprinkler system, complete commissioning
- Electrical/Controls – Transformer installation, wiring of power and control, HMI, programming, integration with existing electrical system, complete commissioning

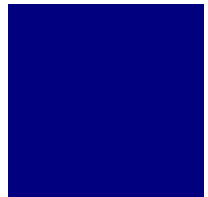
In order to minimize shutdown time for the conveyor tie-in, a detailed safety and procedural review was conducted. The result was that the crew completed the tie-in ahead of schedule.

Our design-build approach allowed maintenance and operations personnel to see the progress and provide meaningful input into the design that translated into the final construction of the facility.

It also allowed the owner to review the progress of the project and make adjustments to the scope to suit their requirements.



BOGE
BOGE



(1980) LTD

268 Ellen Street
Winnipeg, MB R3A 1A7
Email: hboge@boge-boge.com
Phone: (204) 942 7276
Fax: (204) 942 7288

EDIBLE OIL FACILITY EXPANSION



Boge provided design-bid-build services to complete a substantial plant expansion at an edible oil producer in Sask., Canada. Work included:

- Seed Receiving, Seed conditioning, Pre-pressing, Solvent extraction, Meal plant expansion.
- Truck Scale Expansion, New Seed Storage Bin, Bin sweep, Dust Collection, Truck Dump, Seed Office, conveyors, oil storage tanks, piping, valves, pneumatic conveyance, hammermill, cyclones, spouting, explosion panels, HVAC, building envelope, equipment install including: vertical seed conditioner, expeller, blowers, decanter, cake dryer, extractor extension, DTDC cyclones, oil stripper, reboilers, cooling tower, En-Masse conveyor, sparge steam superheater, pumps and ductwork.

Our team provided:

- Structural engineering
- Structural installation
- Mechanical installation
- Project supervision
- Construction management

The project required careful planning and execution for work to be completed during the allotted shutdown period.

Our in-house engineering team facilitated an improvement in schedule because the selection of equipment had not been finalized, and we were able to commit to final structural drawings to permit fabrication of steel to fit within the schedule.



BOGE
BOGE



(1980) LTD

Boge & Boge (1980) Ltd.
268 Ellen Street
Winnipeg, MB R3A 1A7
hboge@boge-boge.com
www.boge-boge.com
Phone: (204) 942 7276
Fax: (204) 942 7288



Diaser Management (2006) Ltd
268 Ellen Street
Winnipeg, MB R3A 1A7
Tel: (204) 943 8855
Fax: (204) 943 8856

WINNIPEG AIRPORT EXPANSION



Boge served to support quality assurance and control activities for some structural steel elements for the Winnipeg James Armstrong Richardson International Airport Redevelopment.

Our team reviewed architectural, structural, fabrication drawings and site conditions to support the project.

Our engineering team provided:

- Inspection
- Technical quality control supervision

Our construction team:

- Completed repairs as designed by our engineering team.

Our design-build experience combined technical excellence in the engineering and construction aspects.



Diaser Management (2006) Ltd
268 Ellen Street
Winnipeg, MB R3A 1A7
Tel: (204) 943 8855
Fax: (204) 943 8856

BOGE
BOGE

(1980) LTD

Boge & Boge (1980) Ltd.
268 Ellen Street
Winnipeg, MB R3A 1A7
hboge@boge-boge.com
www.boge-boge.com
Phone: (204) 942 7276
Fax: (204) 942 7288

GRAIN HANDLING



Boge and Diaser offer Design and Build of grain handling facilities including Terminal and high throughput Inland Terminals

- General arrangement and conceptual layouts of the complete facility
- P&ID diagrams for auto control and PLC programming
- Structural layout and design of load out towers, conveyor galleries, support towers, walkways, distributor supports, and conveyor galleries
- Concrete design
- Material handling equipment including receiving pits, receiving drag conveyors, bucket elevators, spouting, distributor, load out spouts
- Reclaim drag and belt conveyors
- Manual and automatic bin gates including blending control
- Steel bin sizing and location, overhead conveyor galleries
- Foundation design
- Car Progressioners



BOGE
BOGE



(1980) LTD

Boge & Boge (1980) Ltd.
268 Ellen Street
Winnipeg, MB R3A 1A7
hboge@boge-boge.com
www.boge-boge.com
Phone: (204) 942 7276
Fax: (204) 942 7288

Projects include:

\$1 M Upgrade to Inland Terminal,
Yorkton SK

\$4 M Upgrade to Inland Terminal,
Hamlin SK.

\$1 M Upgrade to Inland Terminal,
Moose Jaw, SK



Diaser Management (2006) Ltd
268 Ellen Street
Winnipeg, MB R3A 1A7
Tel: (204) 943 8855
Fax: (204) 943 8856

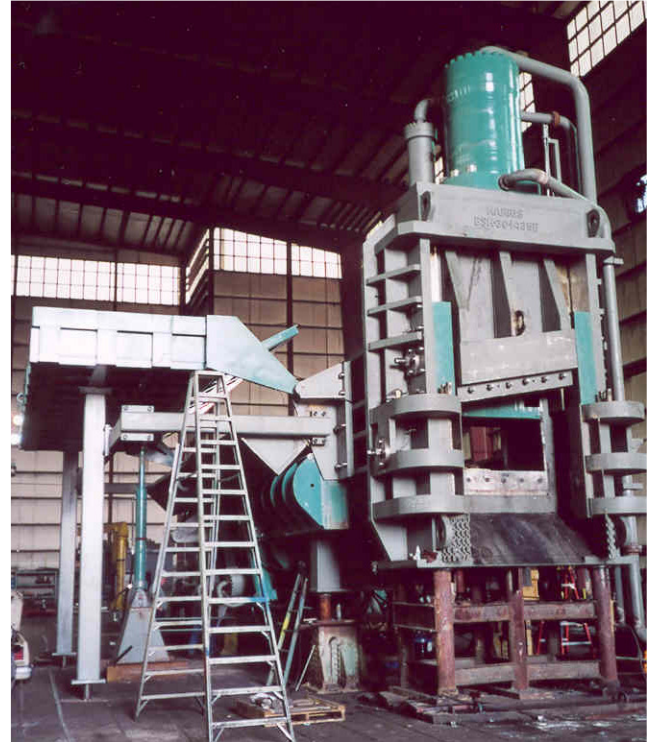
MANDAK METAL

In 2003 Boge and Boge (1980) Ltd. provided a design build project to Mandak Metal Processors in Selkirk, Manitoba. A machine capable of shearing a 10" x 10" steel billet was installed. Boge believes this to be the largest shearing machine in Canada and one of the largest in North America.

Services include design and construction of all aspects excluding electrical and equipment supplied works. Construction responsibilities included equipment installation under the direction of the equipment supplier's representative. Engineered lifts were made for loads as high as 220,000 pounds. Careful coordination between rail car unloading and construction aided in establishing an efficient assembly process.

The project included heavy caisson foundations and robust concrete works, a building to house the shear ancillary equipment, a control room on the roof of the building, the shear, and a stacker conveyor capable of pivoting in plan to load cars on either of two rail lines. Boge engineering and construction management was combined to produce a successful project. The equipment was purchased by the owner.

The Boge team provided costing and scheduling data in the feasibility stage. Over 8,000 person hours of labour were completed without a single lost time safety incident.



Research and familiarity with previous shear design and construction assured good decision making in the design and planning aspects as they pertained to reliability, availability, constructability, maintenance and operations aspects.

The involvement of Boge in the feasibility stage facilitated an effective incorporation of constructability, maintenance and operations perspectives into the systems design and general arrangement planning.

BOGE
BOGE

Boge & Boge (1980) Ltd.
268 Ellen Street
Winnipeg, MB R3A 1A7
hboge@boge-boge.com
www.boge-boge.com
Phone: (204) 942 7276
Fax: (204) 942 7288

(1980) LTD

ENGINEERING, CONSTRUCTION AND DESIGN-BUILD SERVICES**Engineering**

- Structural, mechanical and process engineering
- Controls and automation
- Conceptual and detailed design
- Construction engineering
- Equipment installation and evaluation (new and used)
- Facility management planning
- Heat recovery systems and evaluations
- Maintenance and upgrade
- Planning
- Preliminary engineering and feasibility studies
- Project certifications
- Steel and concrete evaluation
- Structural and mechanical inspections

Design-Build

- New Mine Design and Construction
- New facilities
- Refurbish and retrofit existing facilities
- Fabricate equipment under license
- Buildings and structures
- Equipment upgrade, replacement, installation and commissioning
- Operator training

Consulting

- Scoping Studies
- Business plan preparation and evaluation
- Project conception
- Construction contract preparation
- Construction management and administration
- Cost control
- Cost-estimating
- Feasibility studies
- Project and cost audits
- Project evaluation and justification
- Project management
- Safety programs and lock-out procedures
- Tender document preparation
- Peer review – assistance and support of client's in-house engineering

Site Services

- Project management
- Construction management
- Field Inspections
- Major maintenance outage planning
- Materials and cost control
- On-site field engineering
- Project liaison
- Quality control
- Safety Supervision

Drafting

- General arrangement and equipment layouts
- Process flow and P&ID diagrams
- Piping, hydraulics, industrial ventilation
- Structural steel and steel detailing
- Fabrication details
- 3-D CAD and rendering
- AutoCAD and Microstation

Project Applications (Surface and Underground)

- Air handling systems
- Ball mills
- Bins (Coarse Ore, Fine Ore, Process)
- Bulk material handling
- Chutes
- Converters (structural)
- Conveyor design, evaluation and upgrade
- Cooling towers
- Crane evaluation and upgrade
- Dust control
- Equipment (new and used) evaluation and installation
- Feeder evaluation and upgrade
- Filters
- Flood damage repair
- Grizzlies
- Headframe
- Heat recovery systems and evaluations
- Industrial Ventilation
- Ore pass repair
- Piping and pumping
- Pneumatic conveying
- Pressure vessels

Project Applications (Surface and Underground) Cont'd

- Raise caps, bulkheads, underground equipment foundations
- Rock breakers
- Safety planning
- Screen evaluation and upgrade
- Skip and cage design
- Steel and concrete evaluation
- Tanks

MINING ENGINEERING



Boge and Boge has provided consulting engineering services to the mining industry since 1977 through rebuilding, designing, modifying, maintaining and strengthening mining structures. Our experience includes headframes, hoistrooms, mill buildings, crushing facilities and handling facilities above and below ground. We have worked for Hudson Bay Mining and Smelting, Vale Inco, Bissett Mine, Campbell Red Lake Mines, Dickenson Mine, McFinley Mine, and Placer Dome.



- Complete design and construction of surface facilities
- Feasibility studies
- Prime consulting for structural, process, mechanical, electrical and control engineering
- Design-Build construction
- Shutdown
- Upgrading and refurbishment
- Maintenance
- Project management

BOGE
BOGE



(1980) LTD

Boge & Boge (1980) Ltd.
268 Ellen Street
Winnipeg, MB R3A 1A7
hboge@boge-boge.com
www.boge-boge.com
Phone: (204) 942 7276
Fax: (204) 942 7288

MECHANICAL ENGINEERING

Our mechanical experience includes:

- Installing heavy equipment
- Installing new and retrofitting existing conveyors
- Heat reclaim
- Hydraulic systems
- Bulk material handling technology for handling ores, coal, potash, salt, grains, malt, wood chips, logs, wood refuse, boiler ash, etc.
- Air handling systems for industrial ventilation, dust collection and underground mine ventilation
- Industrial process pumping and piping including air, gas, slurry, steam and condensate power piping
- Plant and Maintenance Engineering Services
- Project co-ordination including engineering, procurement and construction contract administration

We have design experience in various sectors including:

- Mining, Smelting and Refining
- Industrial
- Ammonia works
- Pulp and paper
- Edible oil processing
- Water treatment plants
- Grain elevators



BOGE
BOGE

(1980) LTD

Boge & Boge (1980) Ltd.
268 Ellen Street
Winnipeg, MB R3A 1A7
hboge@boge-boge.com
www.boge-boge.com
Phone: (204) 942 7276
Fax: (204) 942 7288

STRUCTURAL ENGINEERING



Boge and Boge have experience in a broad spectrum of structural projects. Our structural assignments have involved projects in mines, crushing and refining facilities, manufacturing facilities, steel mills, pulp and paper mills, and fertilizer plants. Our experience in light industry includes projects in bottling plants, material handling and warehousing facilities. As structural consultants, Boge and Boge has developed a sound reputation for creative problem solving in relation to time sensitive schedules.



- Analysis, design and inspections
- Steel, concrete, masonry, timber
- Foundations
- Forensic analysis
- Strengthening
- New & expanded facilities
- Refurbishments, upgrades
- Cranes
- Ladders, rails, platforms
- Design-Build construction

BOGE
BOGE

(1980) LTD

Boge & Boge (1980) Ltd.
268 Ellen Street
Winnipeg, MB R3A 1A7
hboge@boge-boge.com
www.boge-boge.com
Phone: (204) 942 7276
Fax: (204) 942 7288

ENGINEERING

Studies - Boge & Boge provides a wide variety of studies to a varied client base of small to large corporations, individual owners, property managers, developers, business entrepreneurs, community organizations and the various levels of government.

Feasibility Studies - for mining development and processing plants are a common service we provide.

Business Planning - In addition Boge and Boge can produce related business plans to meet specific client needs.

Scoping Studies – for new mines

Audits - Boge & Boge has developed a reputation for conducting a variety of audits.

Building - Numerous Building audits have been carried out by our firm for a number of large industrial clients and various levels of government. These audits typically comprise assessment of the current condition of the building with long and short term remedial and/or management plans with the associated budget requirements.

Design Review – Boge & Boge is also retained by clients to conduct third party design review audits of proposed projects wherein the clients concern is for our expertise in generating design efficiencies and/or confirming the appropriateness of specific elements of the design proposal.

Safety audits - of physical plant and processes are becoming an important service that we are being increasingly asked to deliver. We have experience in the design and production of safety procedures, manuals and systems.

Consulting cont'd...

Reviews and Inspections –

This is a significant area in which Boge & Boge is frequently called upon to conduct inspections of structural, mechanical or building envelope problems and then to make recommendations for repair or remediation.

Conceptual Design –

Innovation tempered with the best of established practice is the cornerstone of our design approach. We specialize in structural, mechanical and process design.

Detailed Design –

Is approached with the same commitment as in our conceptual design. Detailed design is provided in all of the above disciplines and culminates in a complete set of drawing documents.

Tender Document Preparation –

Boge & Boge is experienced in the preparation of all tender documents including specifications.

Construction Contract Preparation –

Boge & Boge can assist the client in the preparation of required construction contracts.

Contract Administration –

Boge & Boge regularly administers construction contracts for its clients in all sectors. Progress payments, quality of construction, change orders, dispute resolution between owner and contractor are some of the elements of a complete package of services that we offer.

Consulting cont'd...

Construction Management –

Boge & Boge can assure that the project proceeds smoothly by providing construction management services if the client or project requires it.

Construction Engineering –

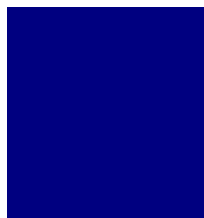
Boge & Boge is often called upon by members of the construction industry to provide them the engineering required to physically construct a structure. Mobilization and modification of construction cranes, scaffolding design, and temporary supports for structural erection are just a few of the broad range of construction services we can provide.

Cost Control –

Boge & Boge can offer clients detailed cost control service through the provision of material take-offs, and the production of fabrication drawings.

Cost estimates for construction budget purposes can be provided for any project. Ultimate cost control for the client can be achieved through the option of Boge & Boge design build services.

BOGE
BOGE



(1980) LTD

Boge & Boge (1980) Ltd.
268 Ellen Street
Winnipeg, MB R3A 1A7
hboge@boge-boge.com
www.boge-boge.com
Phone: (204) 942 7276
Fax: (204) 942 7288